

BOLIN™

A Product of MBI, Inc.

X-RAY FILTER SYSTEM

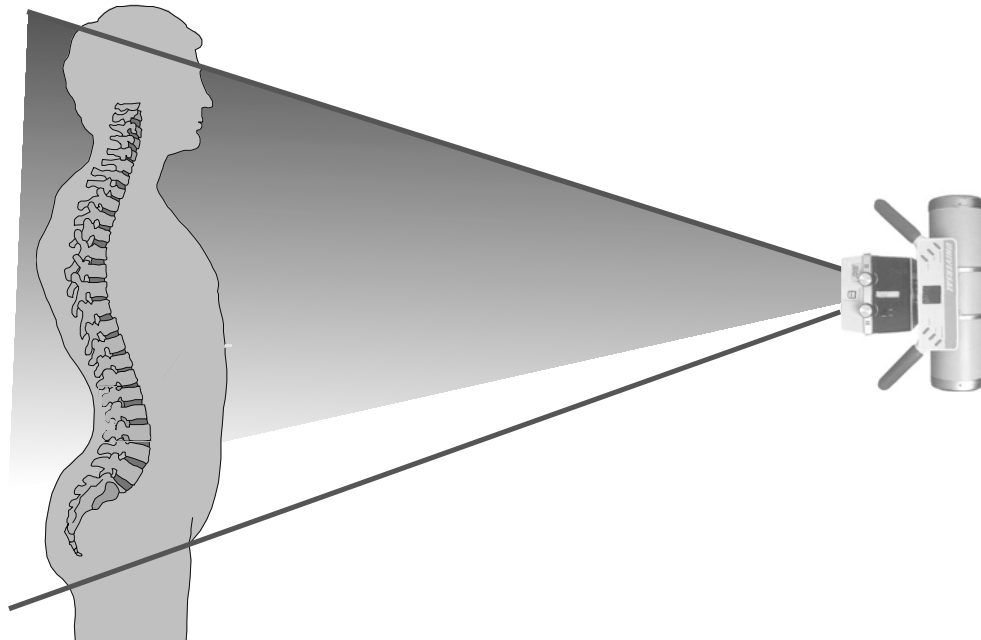
AP-72 AND AP-40 FILTER SYSTEM INSTRUCTIONS

Each filter slides easily into the accessory mounting rails which are mounted to the face collimator. The filters are self-aligning when used with our accessory mounting rails, although most accessory mounting rails can be used.

The AP-72 Filter set and AP-40 Filter set each consist of four filters of increasing density, and are labeled 1, 2, 3 and 4. The AP thoracic/full spine filters are designed to provide proper filtration from 60" to 84" tube distance for the AP-72 filters and at 40" tube distance for the AP-40 filters. The X-Ray exposure technique should be set for the AP lumbar density.

*** Always position patient and align collimator, *before* inserting filter. ***

- Use filter #1 for abdominal depth of approximately 20 cm. or less.
- Use filter #2 for abdominal depth of approximately 21 cm. to 25 cm.
- Use filter #3 for abdominal depth of approximately 26 cm. to 35 cm.
- Use filter #4 for abdominal depth of approximately 36 cm. or more.



Designed for convenience... without compromising safety.